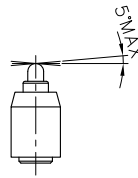
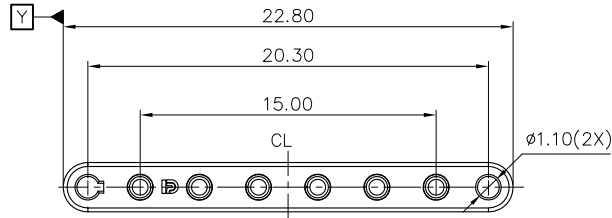


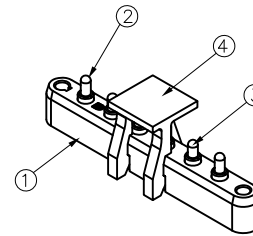
AUTOCAD GENERATED DRAWING,DON'T CHANGE BY HAND

**RoHS** **HF**

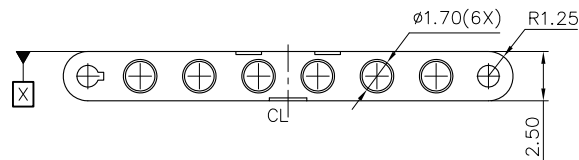
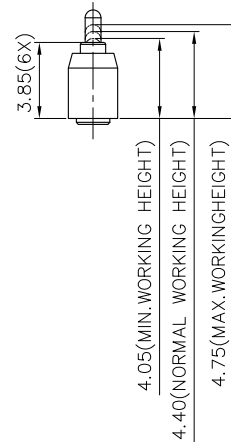
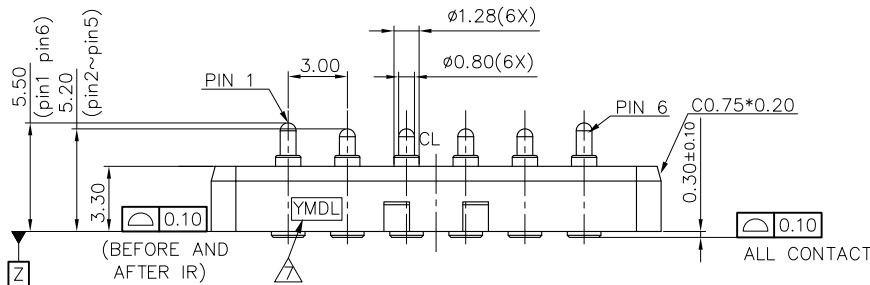
REV.	ECN. NO.	APPD.
A	ECN170406008	Tommy
B	ECN170627018	Tommy



MATING ANGLE



3D VIEW



NOTES:

1.ELECTRICAL CHARACTERISTICS:

1-1.EACH CONTACT CURRENT RATING:0.5A MAX.

1-2.CONTACT RESISTANCE:50mΩ MAX.

1-3.INSULATION RESISTANCE:100 MΩ MIN.

1-4.WITHSTANDING VOLTANCE: 250 V AC.

2.MECHANICAL SPECIFICATION:

3.SPRING FORCE:INITIAL FORCE(PIN1 PIN6) 20gf.(QUIESCENCE)  
INITIAL FORCE(PIN2~PIN5) 40gf.(QUIESCENCE)  
70±14gf AT MAX.WORKING HEIGHT.(QUIESCENCE)  
90±28gf AT NORMAL.WORKING HEIGHT.(QUIESCENCE)  
110±22gf AT MIN.WORKING HEIGHT.(QUIESCENCE)

3-1.DURABILITY:20000 CYCLES(MIN.).AT NORMAL WORKING HEIGHT.  
3-2.MATING ANGLE BETWEEN POGO PIN AND THE COUNTERPART TERMINAL:MUST BE WITHIN±5°.

4.ENVIRONMENT SPECIFICATION:

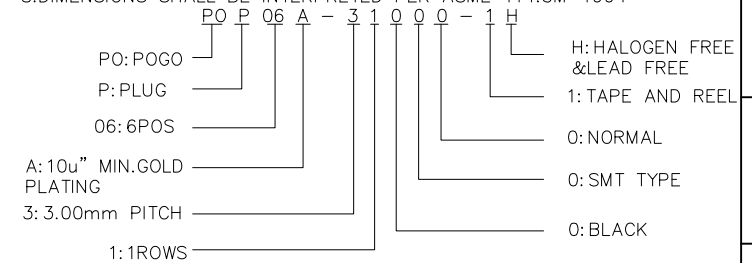
4-1.OPERATING TEMPERATURE: -40°C TO +85°C

5.TO ENSURE THE BEST USAGE,PLEASE OPERATE IT BASED ON THE WORKING HEIGHT STROKE.SHALL NOT EXCEED THE MAX ALLOWED COPRESSION.

6.PLEASE CONTACT HIGHSTAR REPRESENTATIVE TO VERIFY PRODUCT DETAILS & AVAILABILITY.

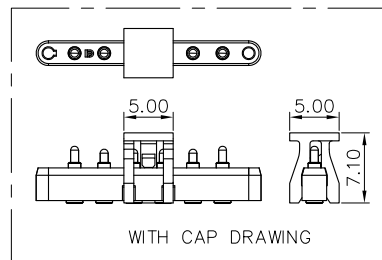
△DATE CODE LASER ON SURFACE, DETAIL AS BELOW

8.DIMENSIONS SHALL BE INTERPRETED PER ASME Y14.5M-1994



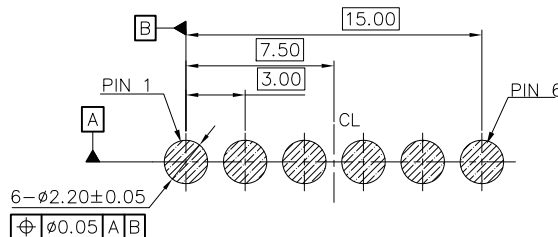
ITEM	DESCRIPTION	Q'TY	MATERIAL	FINISH
4	CAP	1	LCP	MOLDER COLOR: BLACK
3	CONTACT (SHORT)	4	BRASS	SPRING: 3u" MIN. GOLD PLATING PISTON: 10u" MIN. GOLD PLATING 50u" MIN Ni UNDER PLATING OVER ALL.
2	CONTACT (LONG)	2		BARREL: SOLDERING AREA: 4u~10u" Au. 80u" MIN Ni UNDER PLATING OVER ALL. BARREL INSIDE: 4u" Au MIN. 40u" MIN Ni UNDER PLATING OVER ALL.
1	HOUSING	1	HTN	MOLDED COLOR: BLACK
				FINISH

UNITS: mm	GENERAL TOLERANCE	APPROVED: Tommy	PART NO.: POP06A-31000-1H
DATE: 06/27/17	X. ±0.50 .X ±0.30 SCALE: 4/1	CHECKED: Wes Wu	TITLE: CUSTOMER DRAWING FOR 3 PITCH 6PIN POGO PIN PLUG
SHEET: 1/2	MATERIAL: N/A	DRAWING: Fei Liu	DRAWING NO.: 820-0000-0524
REV. B	FINISH: N/A	Highstar Drapho ELECTRONICS TECHNOLOGY CO., LTD	



WITH CAP DRAWING

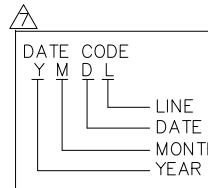
WITH CAP SHOW  
SCALE 2:1



RECOMMEND FPC LAYOUT (TOLERANCE: ±0.05mm)  
RECOMMEND FPC THICKNESS IS 0.20mm

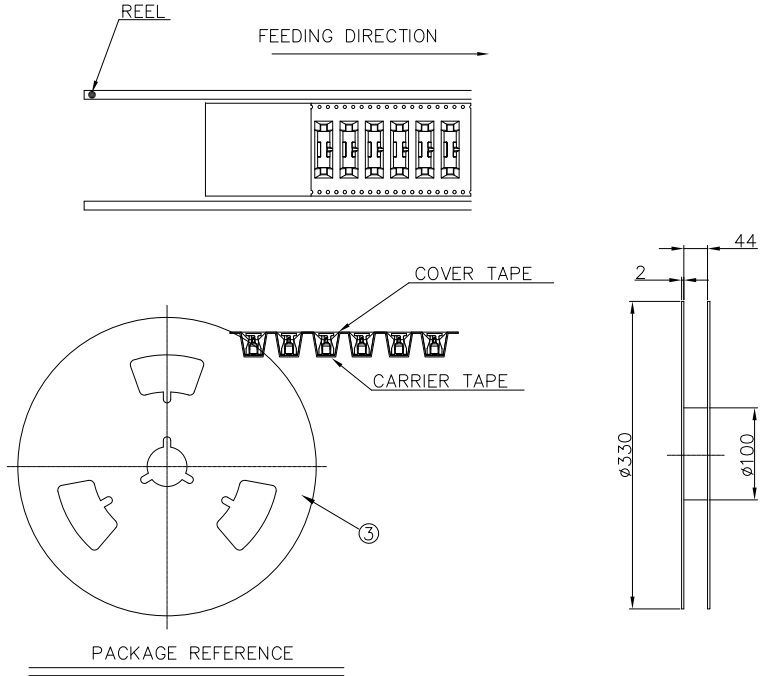
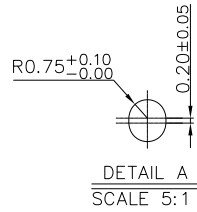
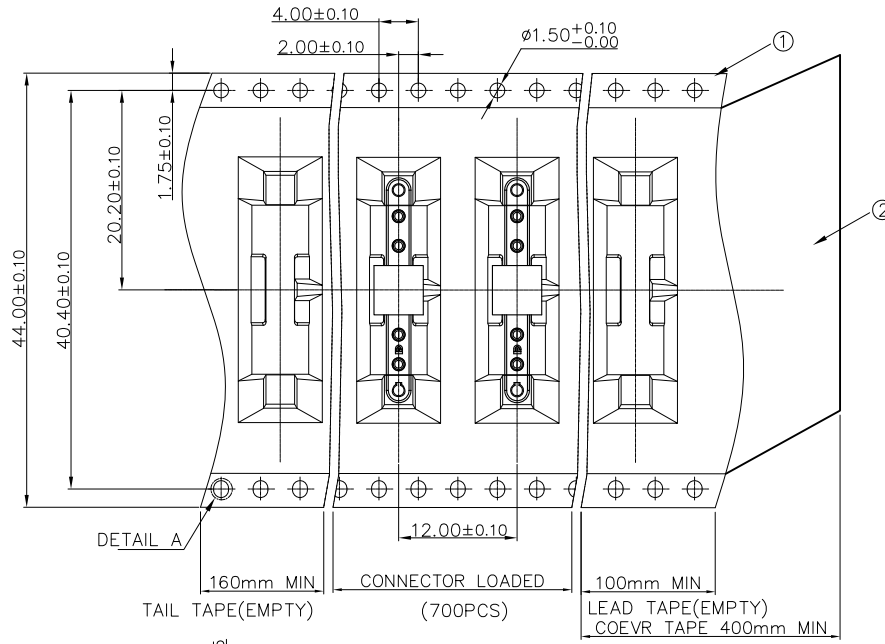
PIN DEFINITION

NO.	PIN DEFINITION
PIN 1	GND
PIN 2	VCC5-OP
PIN 3	USB2_D+
PIN 4	USB2_D-
PIN 5	OP_DET#
PIN 6	TAB_DET# (GND)

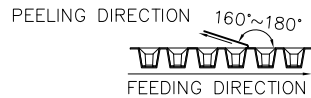


REV.	ECN. NO.	APPD.

**RoHS** **HF**



NOTES:  
 1.10 PITCHES CUMULATIVES TOLERANCE ON TAPE IS +/-0.20mm;  
 2.COVER TAPE PEELING STRENGTH :0.01~0.15Kgf;  
 3.THE COVER TAPE SHALL BE PULLED WITH A VELOCITY OF 100mm~300mm/MINUTE TO CARRIER TAPE;



4.PACKAGING CAPACITY:

P/N	PCS/REEL	REEL/BOX	PCS/BOX
POP06A-31000-1H	700	6	4200

③	REEL	POLYSTYRENE
②	COVER TAPE	POLYSTER
①	CARRIER TAPE	POLYSTYRENE
ITEM	DESCRIPTION	MATERIAL

UNITS: mm	GENERAL TOLERANCE		APPROVED: Tommy	PART NO.: POP06A-31000-1H
DATE: 06/27'17	X. ±0.50 .X ±0.30	X.* ±3° .X.* ±2°	CHECKED: Wes Wu	TITLE: CUSTOMER DRAWING FOR 3 PITCH 6PIN POGO PIN PLUG
SCALE: 2/1	.XX ±0.20		DRAWING: Fei Liu	DRAWING NO.: 820-0000-0524
SHEET: 2/2	MATERIAL: N/A	Q'TY N/A	Highstar Drapho ELECTRONICS TECHNOLOGY CO., LTD	
REV. B	FINISH: N/A	⊕ ≡		