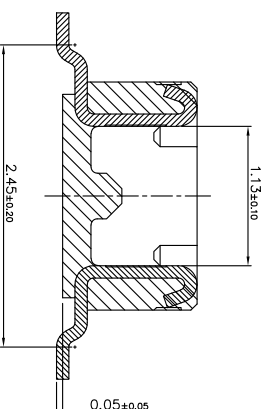
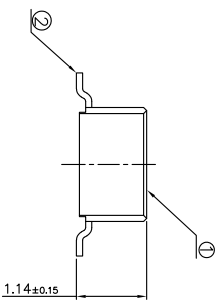
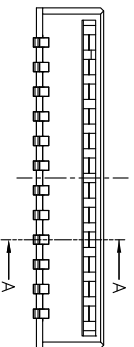
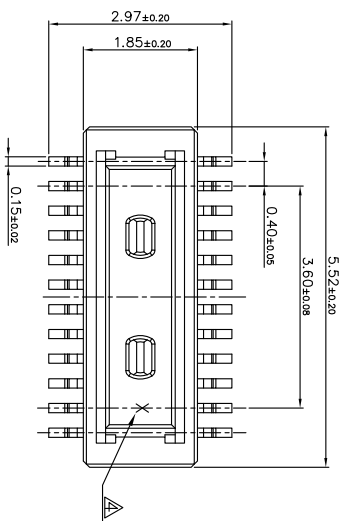
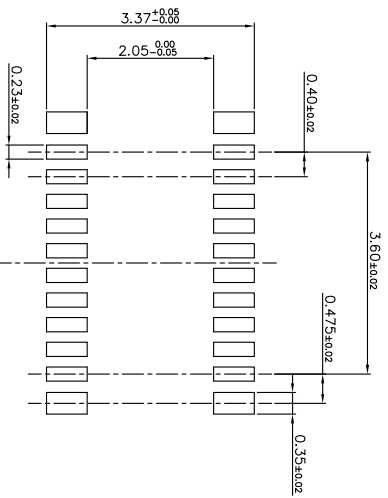




| REV. | ECN. NO. | APPD. |
|------|--------------|----------|
| A | ECN181008008 | Fan Fang |



Section A-A
SCALE 2:1



- NOTES:
1. ALL LEADS CO-PLANARITY SHALL BE 0.10 MAX.
 2. EACH ON CONTACT AT 4 CORNERS SHALL BE USED AS METAL HOLD DOWN.
 3. 20 POSITIONS HAVE LOCKING SYSTEM BY CONCAVE DESIGN ON CONTACTS.
 4. ** MARK AND CAV NO. ARE INDICATED IN APPROXIMAL POSITION SHOWN.

PART LIST

| | |
|---|-------------------------------|
| BT 4P 20 1 -11000-1H | LEAD FREE & HALOGEN FREE |
| BTB CONN. PITCH 0.40MM POS. NO. 20-20POS. | PACKAGE TYPE 1: TAPE AND REEL |
| CONTACT AREA PLATING 1: GOLD PLATING | PROFILE HEIGHT 11:114mmH |

| | | | |
|----------------|-----------------------|---------------------|---|
| ① | HOUSING | HIGHTEMP-PLASTIC | UL94V-0, BLACK |
| ② | CONTACT | COPPER ALLOY | 50U" MIN NICKEL UNDER PLATED ; 2U" Au MIN ON CONTACT AREA; 1U" GOLD ON SOLDER AREA; |
| ITEM NO. | NAME | MATERIAL | FINISH |
| UNITS: mm | GENERAL TOLERANCE | APPROVED: River Yoo | PART NO.: BT4P201-11000-1H |
| DATE: 10/23/18 | X: ±0.25 .X: ±0.20 | CHECKED: River Yoo | TITLE: CUSTOMER DRAWING FOR 0.40MM PITCH 1.50MM MH 20POS BTB PLUG CONN. |
| SCALE: N/A | .XX ±0.15 | DRAWING: Shan Chen | DRAWING NO.: 820-0000-0710 |
| SHEET: 1/2 | MATERIAL: Q'TY N/A | | |
| REV: A | FINISH: SEE TABLE | | |

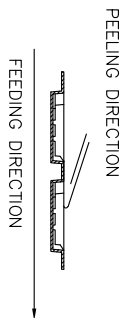


RECOMMENDED METAL MASK THICKNESS: 120um
RECOMMENDED METAL MASK OPENING RATIO: 80% FOR LAEAD PAD
PCB PATTERN LAOUT

Drapho ELECTRONICS TECHNOLOGY CO., LTD
Highstar

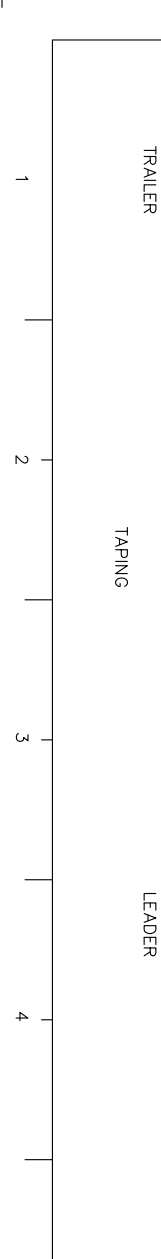
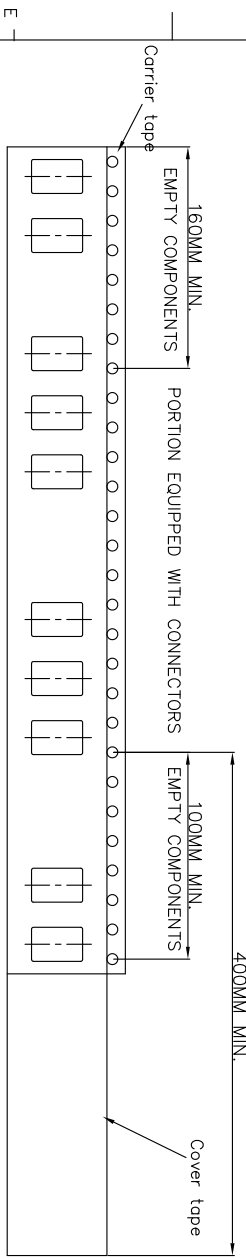
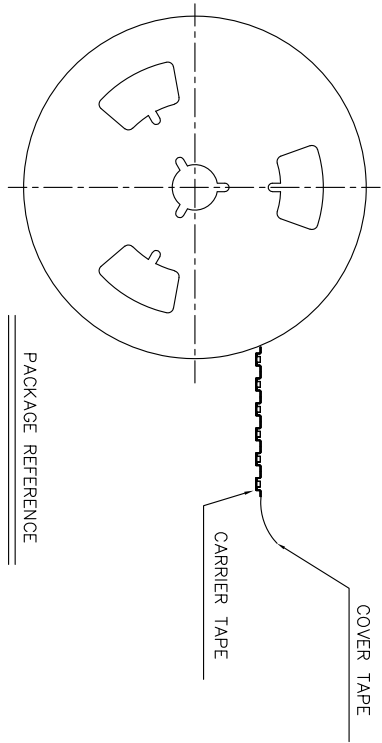
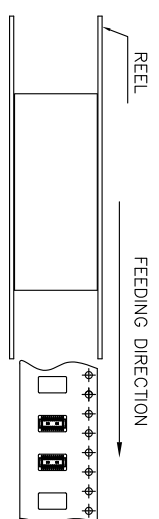
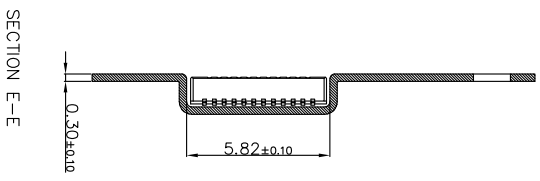
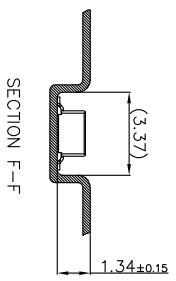
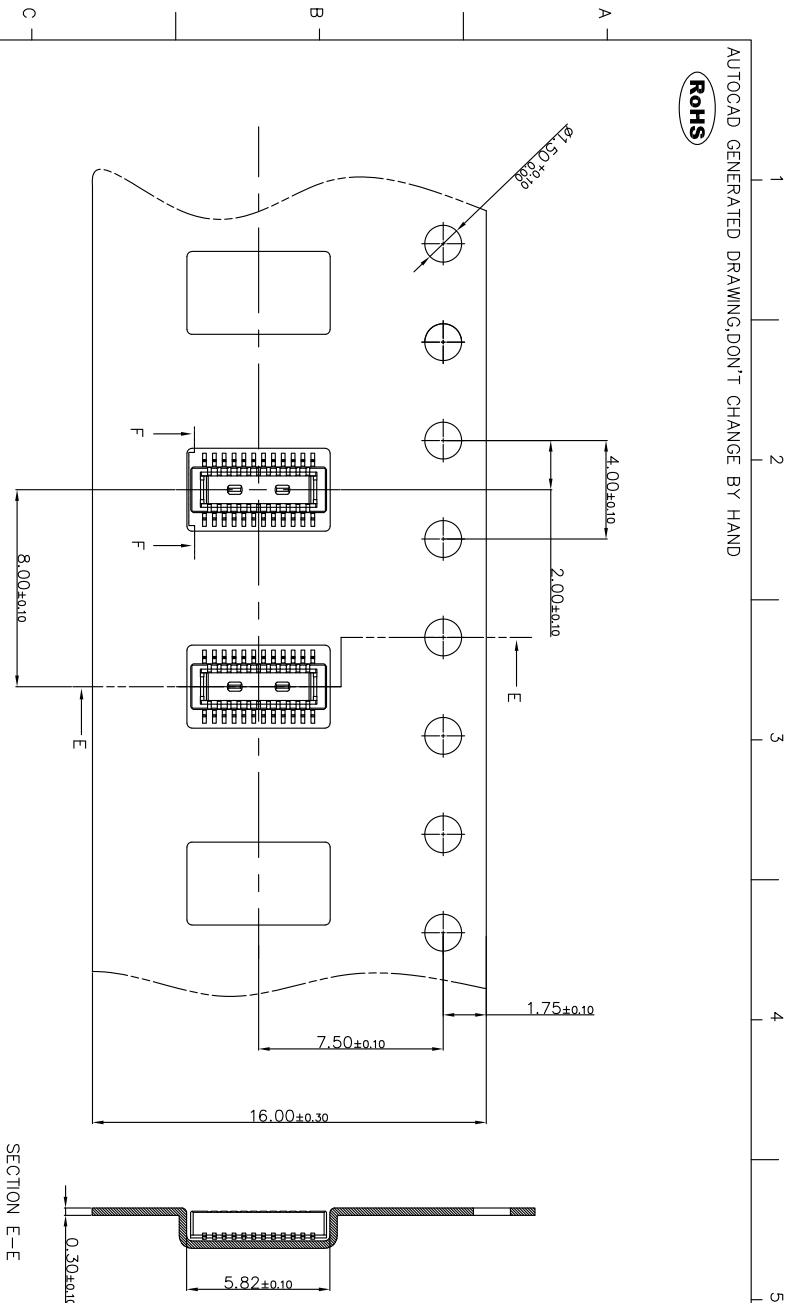
NOTES:

1. THE DIMENSIONS IN PARENTHESES ARE FOR REFERENCE.
2. COVER TAPE PEELING STRENGTH : 0.13kgf MAX. AT 300mm/MINUTE;



3. PACKAGING CAPACITY:

| P/N | PCS/REEL | REEL/BOX | PCS/BOX |
|------------------|----------|----------|---------|
| BTAP201-11000-1H | 4500 | 13 | 58500 |



| UNITS: | GENERAL TOLERANCE | APPROVE: | PART NO. (INTENDED USE) |
|----------|-------------------|-----------|---|
| mm | | River Yoo | BTAP201-11000-1H |
| DATE: | X: ±0.50 | CHECKED: | TITLE: CUSTOMER DRAWING FOR 0.40MM PITCH 1.50MM MH 20POS BTB PLUG CONN. |
| 10/23/18 | .X: ±0.30 | River Yoo | |
| SCALE: | .XX: ±0.20 | DRAW: | DRAWING NO.: 820-0000-0710 |
| N/A | | Shan Chen | |
| SHEET: | MATERIAL: | Q'TY | |
| 2/2 | N/A | N/A | |
| REV.: A | FINISH: | | |
| | N/A | | |