

AUTOCAD GENERATED DRAWING,DON'T CHANGE BY HAND

RoHS HF

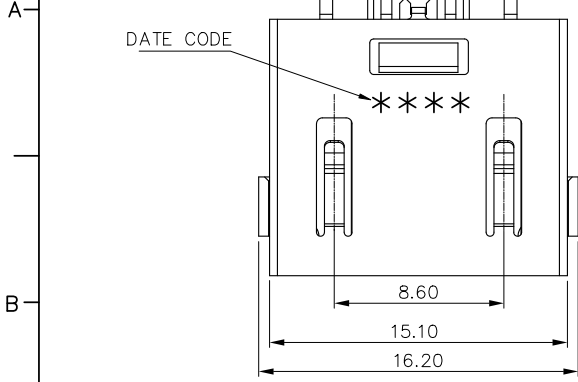
REV.	ECN. NO.	APPD.
A	ECN200622005	River Yao

PJ S S S 5 6 - 32 00B-1 H

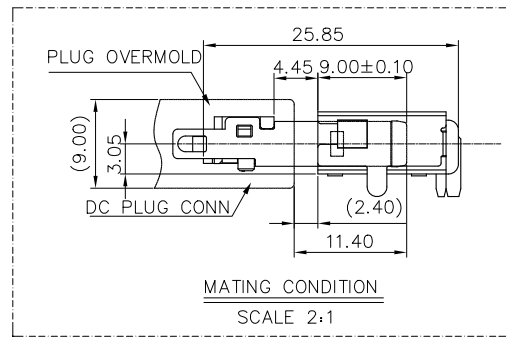
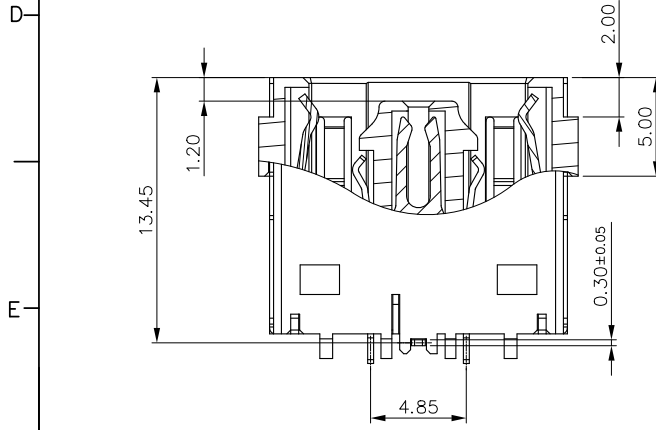
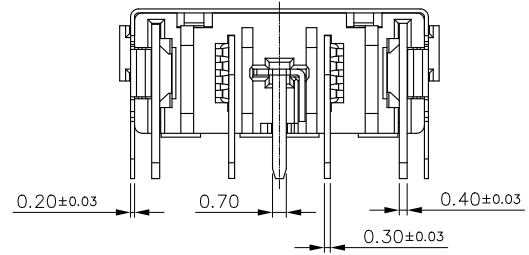
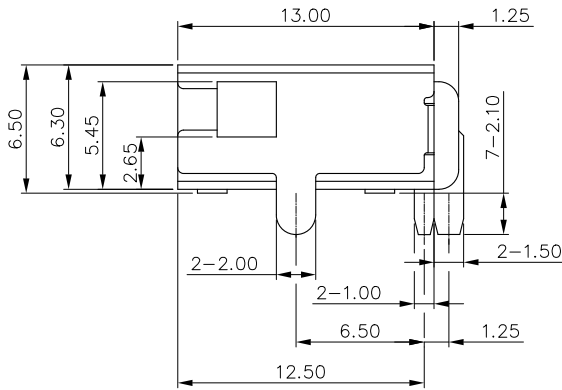
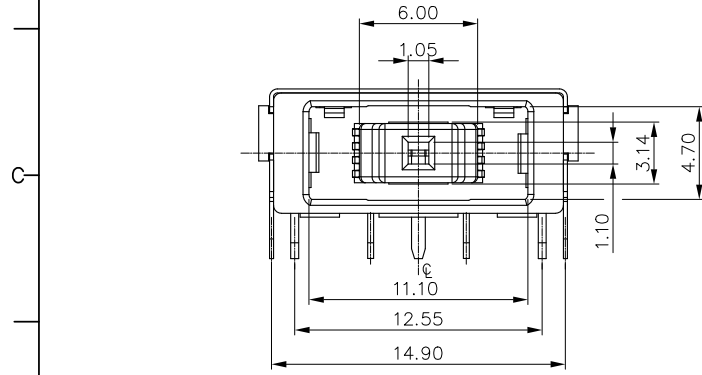
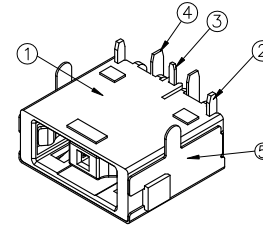
S: DIP TYPE  
 S: RECEPTACLE  
 S: SQUARE  
 CONTACT AREA PLATING  
 6: GOLD 8u"MIN  
 CENTER HEIGHT  
 32: 3.25mm

HALOGEN FREE  
 PACKAGE CODE  
 1: TAPE REEL  
 CURRENT:  
 B: 15A  
 COLOR  
 0: BLACK

NOTES:  
 1.MATERIAL: SEE TABLE.  
 2.ELECTRICAL PERFORMANCES:  
 2-1.VOLTAGE RATINGS: 25V DC MAX.  
 2-2.CURRENT RATINGS: 15A MAX TWO POWER CONTACT  
 1A MAX PER DETECT CONTACT  
 2-3.LOW LEVEL CONTACT RESISTANCE:  
 (1). GROUND CONTACT 7 mΩ MAX. INITIAL,  
 10mΩ MAX, FINAL.  
 (2). DETECT CONTACT 10 mΩ MAX. INITIAL,  
 ΔR=10mΩ MAX, FINAL.  
 (3). POWER CONTACT 7 mΩ MAX. INITIAL,  
 ΔR=10mΩ MAX, FINAL.  
 2-4.INSULATION RESISTANCE: 500 MΩ MIN.  
 2-5.DIELECTRIC WITHSTANDING VOLTAGE:  
 SUBJECT A VOLTAGE OF 150V rms FOR 1  
 MINUTE BETWEEN ADJACENT CONTACTS PER  
 3.MECHANICAL PERFORMANCES:  
 3-1.MATING FORCE: 3.0Kgf MAX.  
 3-2.UNMATING FORCE: 0.7Kgf MIN.  
 3-3.DURABILITY: 5000 CYCLES.  
 4.G.P PASSED ACCORD WITH ROHS STANDARD.  
 5.ENVIRONMENTAL CHARACTERISTICS:  
 OPERATING TEMPERATURE -40°C TO 85°C  
 6.DIMENSIONS SHALL BE INTERPRETED PER ASME Y14.5M-1994



DATE CODE  
 \* \* \* \*  
 LINE OF MACHINE ID  
 DAY(1~9. ABC..W (I,O,V EXCEPT))  
 MONTH(1~9 ABC)  
 YEAR(5=2015 6=2016 ...)

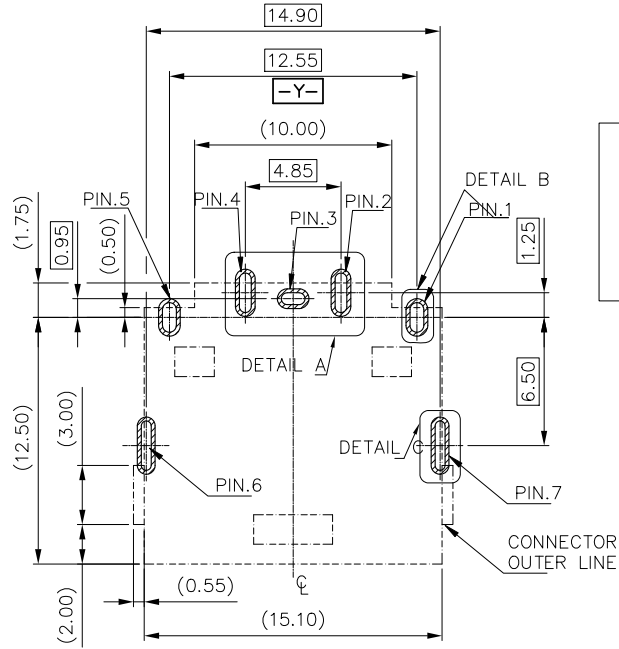


5	SHELL	1	STAINLESS STEEL	10u" MIN. NICKEL UNDER PLATING; 80u" MIN. MATTE TIN PLATING ON SOLDER AREA.
4	POWER	2	COPPER ALLOY	80u" MIN. NICKEL UNDER PLATING; 8u" MIN. GOLD PLATING ON CONTACT AREA; 80u" MIN. MATTE TIN PLATING ON SOLDER AREA.
3	DETECT CONTACT	1	COPPER ALLOY	80u" MIN. NICKEL UNDER PLATING; 8u" MIN. GOLD PLATING ON CONTACT AREA; 80u" MIN. MATTE TIN PLATING ON SOLDER AREA.
2	GROUND CONTACT	2	COPPER ALLOY	80u" MIN. NICKEL UNDER PLATING; 8u" MIN. GOLD PLATING ON CONTACT AREA; 80u" MIN. MATTE TIN PLATING ON SOLDER AREA.
1	HOUSING	1	TEMP-PLASTIC	UL94V-0
ITEM	DESCRIPTION	Q'TY	MATERIAL	FINISH

UNITS: mm	GENERAL TOLERANCE	APPROVED: River Yao	PART NO.:
DATE: 06/22'20	X. ±0.50 .X ±0.30 .XX ±0.20	CHECKED: Wes Wu	PJSSS56-3200B-1H
SCALE: N/A	X.* ±3* .X.* ±2*	DRAWING: Fei Liu	TITLE: CUSTOMER DRAWING FOR DC JACK
SHEET: 1/3	MATERIAL: N/A	Q'TY N/A	DRAWING NO.:
REV. A	FINISH: N/A	Highstar	820-0000-0865
<b>Drapho ELECTRONICS TECHNOLOGY CO., LTD</b>			

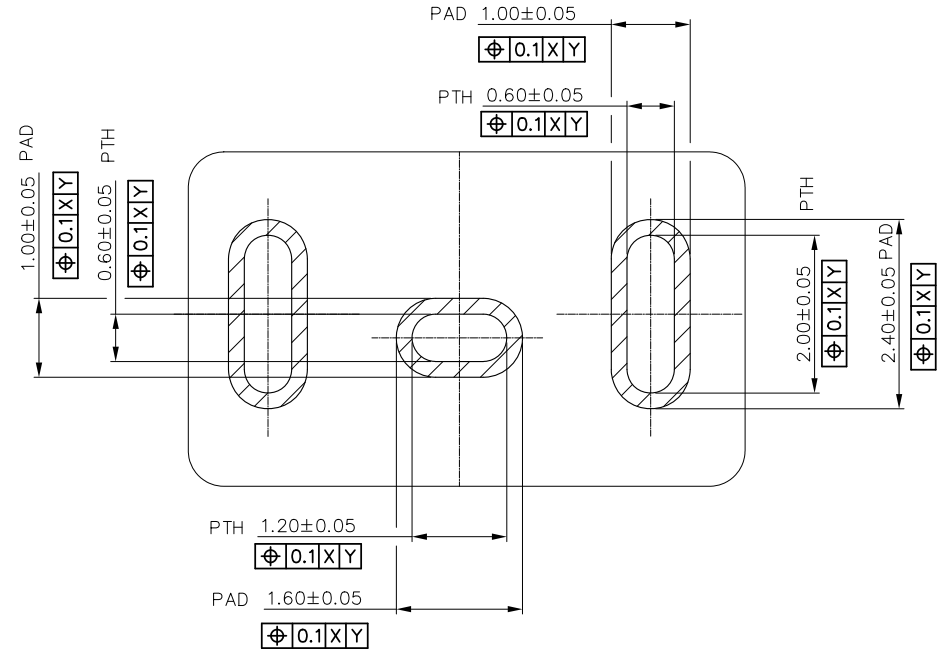
RoHS HF

REV.	ECN. NO.	APPD.

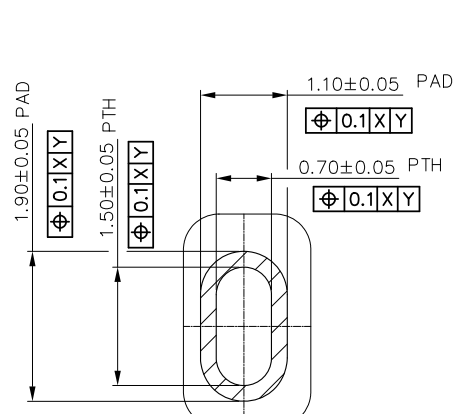


PIN DEFINE:  
 1: GND  
 2: POWER  
 3: DETECT (ID)  
 4: POWER  
 5: GND  
 6: GND  
 7: GND

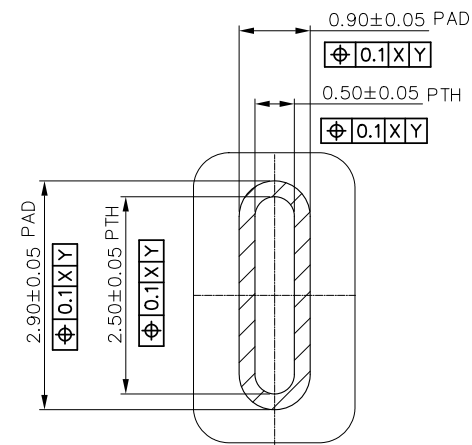
RECOMMENDED P.C.BOARD PATTERN LAYOUT  
 (TOP VIEW)TOLERANCE: ±0.05 (THICKNESS=1.0mm)



DETAIL: A-A



DETAIL: B-B



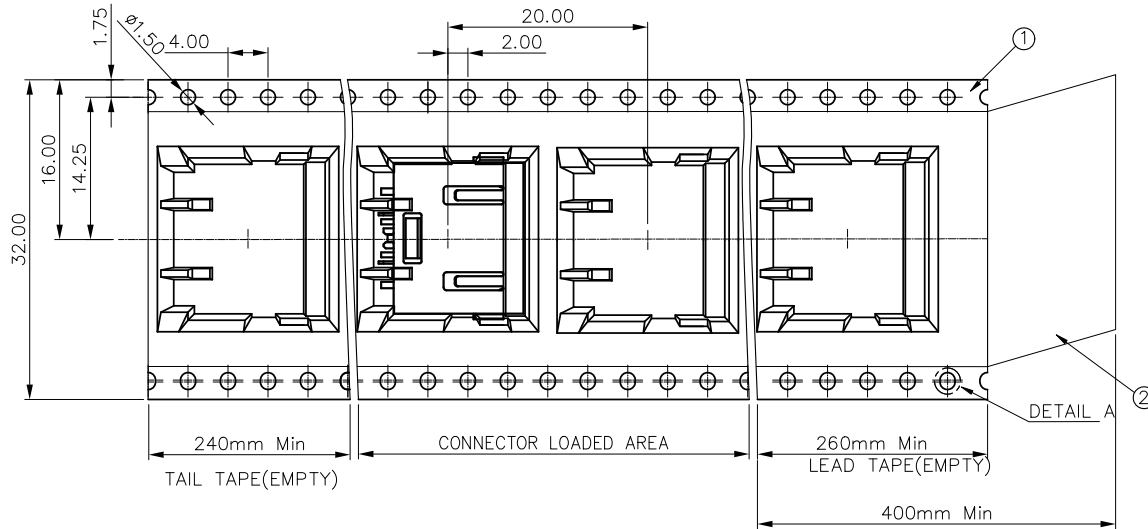
DETAIL: C-C

UNITS: mm	GENERAL TOLERANCE		APPROVED: River Yao	PART NO.: PJSSS56-3200B-1H
DATE: 06/22'20	X. ±0.50 .X ±0.30 .XX ±0.20	X.* ±3° .X.* ±2°	CHECKED: Wes Wu	TITLE: CUSTOMER DRAWING FOR DC JACK
SCALE: N/A			DRAWING: Fei Liu	DRAWING NO.: 820-0000-0865
SHEET: 2/3	MATERIAL: N/A	QTY N/A	Highstar Drapho ELECTRONICS TECHNOLOGY CO., LTD	
REV. A	FINISH: N/A	Φ		

AUTOCAD GENERATED DRAWING,DON'T CHANGE BY HAND

RoHS HF

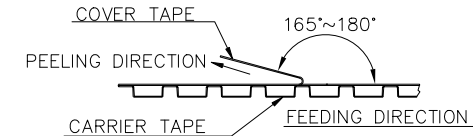
REV.	ECN. NO.	APPD.



DETAIL A

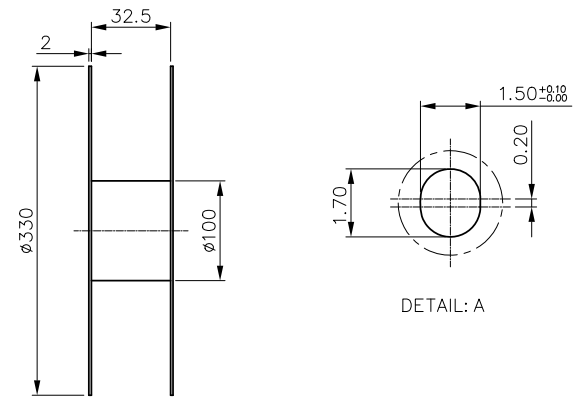
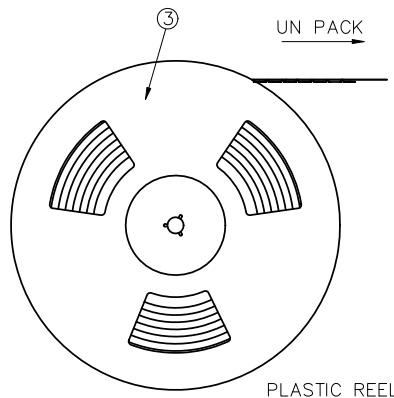
NOTES:

- CARRIER TAPE MATERIAL: THERMOPLASTIC ANTI-STATIC FILM OR EQUIVALENT THICKNESS: 0.50±0.05MM;COLOR: TRANSPARENT.
- COVER TAPE MATERIAL : CONDUCTIVE COVER TAPE OR EQUIVALENT;
- PLASTIC REEL MATERIAL: PS,COLOR:BLUE;
- PEEL STRENGTH REQUIREMENT OF COVER TAPE TO COMPLY WITH EIA-481;
- ALL TAPE AND SPROCKET HOLE DIMENSIONS SHOWN ARE PER EIA-481;
- COVER TAPE PEELING STRENGTH:0.13Kgf MAX. AT 300mm/Min.



7. PACKAGING CAPACITY:

P/N	PCS/REEL	REEL/BOX	PCS/BOX
PJSS56-3200B-1H	300	8	2400



DETAIL: A

③	REEL	POLYSTYRENE
②	COVER TAPE	POLYSTER
①	CARRIER TAPE	POLYSTYRENE
ITEM	DISCRPTION	MATERIAL

UNITS: mm	GENERAL TOLERANCE	APPROVE: River Yao	PART NO.: PJSS56-3200B-1H
DATE: 06/22'20X	.X ±0.50 .XX ±0.30	CHECKED: Wes Wu	TITLE: CUSTOMER DRAWING FOR DC JACK
SCALE: N/A	.XX ±0.20 .XX*	DRAWING: Fei Liu	DRAWING NO.: 820-0000-0865
SHEET: 3/3	MATERIAL: Q'TY	 <b>Highstar</b> Drapho ELECTRONICS TECHNOLOGY CO., LTD	
REV. A	FINISH:		