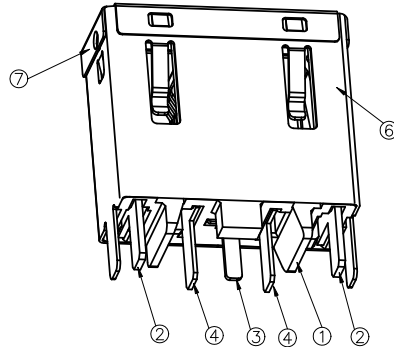
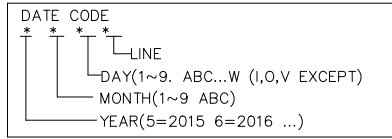
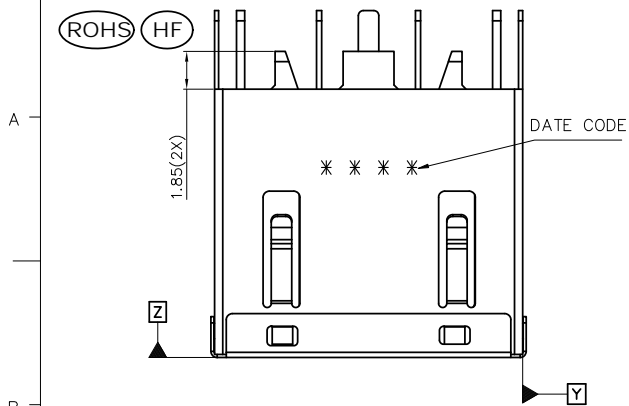


AUTOCAD GENERATED DRAWING, DON'T CHANGE BY HAND

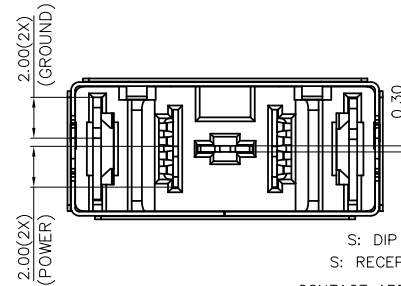
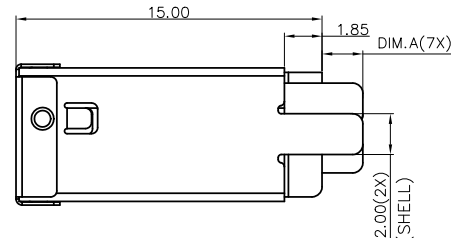
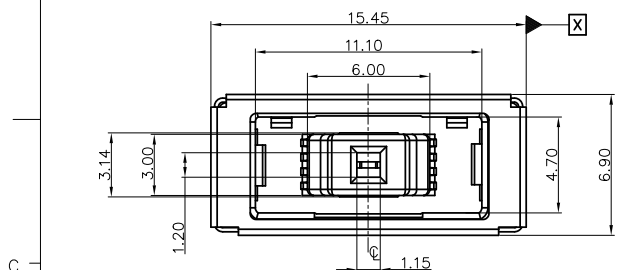
ROHS HF

| REV. | ECN. NO. | APPD. |
|------|--------------|-------------|
| D | ECN160817022 | Fan Fang |
| E | ECN170627017 | Tommy Zhang |
| F | ECN170911024 | Darren Lei |
| G | ECN200313017 | River Yao |



NOTES:

- 1.DIMENSION SHALL BE INTERPRETED PER ASME Y14.5M-1994.
- 2.ELECTRICAL PERFORMANCES:
 - 2-1.VOLTAGE RATINGS: 25V DC MAX.
 - 2-2.CURRENT RATING:
 - 7A & 8.5A & 12.0A MAX TWO POWER CONTACT
 - 1A MAX PER DETECT CONTACT
 - 2-3.LOW LEVEL CONTACT RESISTANCE:
 - (1). GROUND CONTACT 7 mΩ MAX. INITIAL, 10mΩ MAX. FINAL.
 - (2). DETECT CONTACT 10 mΩ MAX. INITIAL, ΔR=10mΩ MAX. FINAL.
 - (3). POWER CONTACT 7 mΩ MAX. INITIAL, ΔR=10mΩ MAX. FINAL.
 - 2-4.INSULATION RESISTANCE: 500 MΩ MIN.
 - 2-5.DIELECTRIC WITHSTANDING VOLTAGE: SUBJECT A VOLTAGE OF 150V rms FOR 1 MINUTE BETWEEN ADJACENT CONTACTS;
- 3.MECHANICAL PERFORMANCES:
 - 3-1.MATING FORCE: 3.0Kgf MAX.
 - 3-2.UNMATING FORCE: 0.7Kgf MIN.
 - 3-3.DURABILITY: 5000 CYCLES.
 - 4.G.P PASSED ACCORD WITH RoHS STANDARD
- CHLORINE(Cl):900ppm MAX.
- BROMINE(Br):900ppm MAX.
- CHLORINE(Cl)&BROMINE(Br):1500ppm MAX.
- 5.HARMFUL MATERIAL SHOULD MEET THE REQUIREMENTS OF DRAPHO STANDARD DOCUMENT "DQSP2014"
- 6.PLEASE CONTACT DRAPHO SALES REPRESENTATIVE TO VERIFY PRODUCT DETAILS & AVAILABILITY.



PJ S S 005 6 - C * 1 H

S: DIP TYPE
S: RECEPTACLE

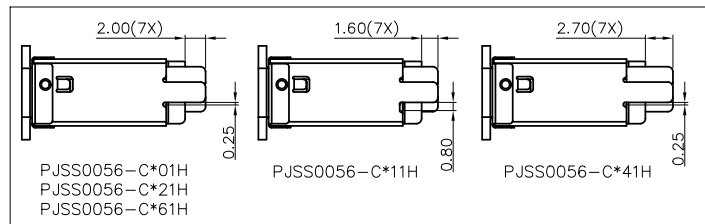
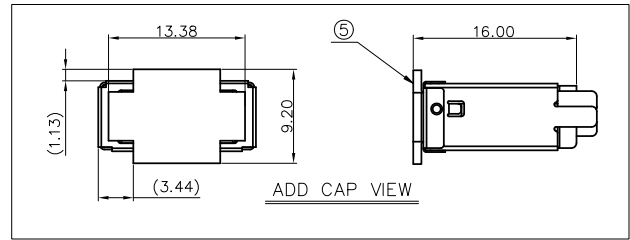
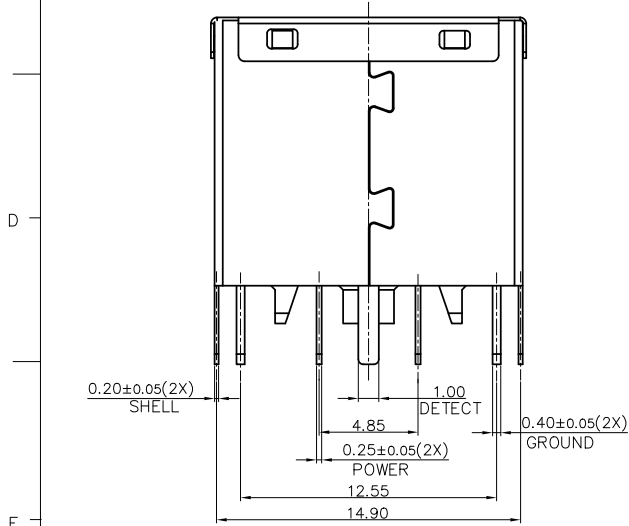
CONTACT AREA PLATING:
6: GOLD 8u"MIN

COLOR: 0=YELLOW
B=BLACK

HALOGEN FREE

PACKAGE CODE:
1: TAPE REEL

SOLDER TAIL LENGTH & CURRENT RATINGS:
0: DIM A=2.0 & 7.0A
1: DIM A=1.6 & 7.0A
2: DIM A=2.0 & 8.5A
4: DIM A=2.7 & 7.0A
6: DIM A=2.0 & 12.0A

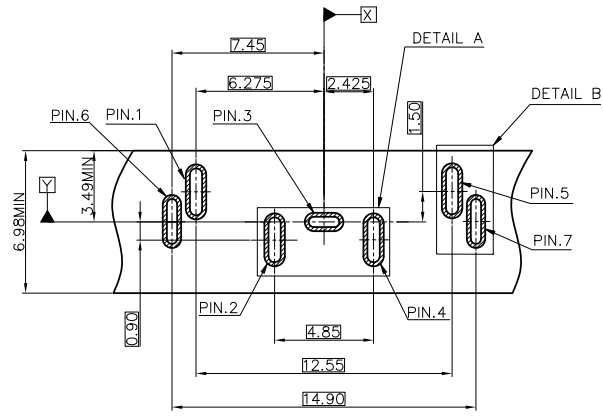


| Q'TY | NAME | MATERIAL | FINISH | ITEM |
|------|----------------|-----------------|--|------|
| 1 | FRONT SHELL | STAINLESS STEEL | 10~50u" NICKEL UNDER PLATING; | ⑦ |
| 1 | SHELL | STAINLESS STEEL | 10~50u" SOLDERABLE NICKEL UNDER PLATING; | ⑥ |
| 1 | CAP | TEMP-PLASTIC | UL94V-0 | ⑤ |
| 2 | POWER CONTACT | COPPER ALLOY | 80u" MIN. NICKEL UNDER PLATING; 8u" MIN. GOLD PLATING ON CONTACT AREA; 80u" MIN. MATTE TIN PLATING ON SOLDER AREA. | ④ |
| 1 | DETECT CONTACT | COPPER ALLOY | 80u" MIN. NICKEL UNDER PLATING; 8u" MIN. GOLD PLATING ON CONTACT AREA; 80u" MIN. MATTE TIN PLATING ON SOLDER AREA. | ③ |
| 2 | GROUND CONTACT | COPPER ALLOY | 80u" MIN. NICKEL UNDER PLATING; 8u" MIN. GOLD PLATING ON CONTACT AREA; 80u" MIN. MATTE TIN PLATING ON SOLDER AREA. | ② |
| 1 | HOUSING | TEMP-PLASTIC | UL94V-0 | ① |

| ITEM | NAME | PART NO. | VENDER |
|------|----------------|------------------|--------|
| ② | REC. CONNECTOR | PJSS0056-C**1H-C | Drapho |
| ① | PLUG CONNECTOR | PJCP0056-1*02H-C | Drapho |

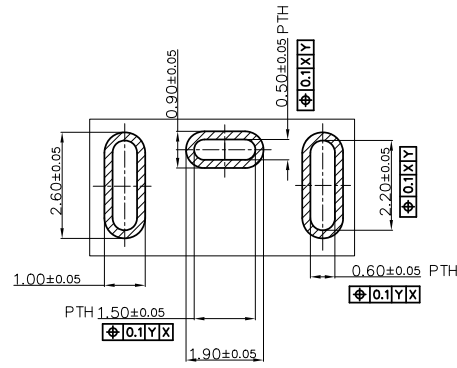
| UNITS: mm | GENERAL TOLERANCE | | APPROVED: | PART NO.: |
|----------------|-------------------|-------------|---|--|
| DATE: 03/20'20 | X: ±0.50 | X.* ±3' | River Yao | PJSS0056-C**1H |
| SCALE: N/A | .X ±0.30 | .X' ±2' | Wes Wu | TITLE: CUSTOMER DRAWING FOR DC JACK 90° DIP TYPE |
| SHEET: 1/3 | .XX ±0.20 | .XXX ±0.10 | Fei Liu | DRAWING NO.: 820-0000-088 |
| REV. G | MATERIAL: N/A | FINISH: N/A | Highstar Drapho ELECTRONICS TECHNOLOGY CO., LTD | |

| | | |
|------|----------|-------|
| REV. | ECN. NO. | APPD. |
| | | |

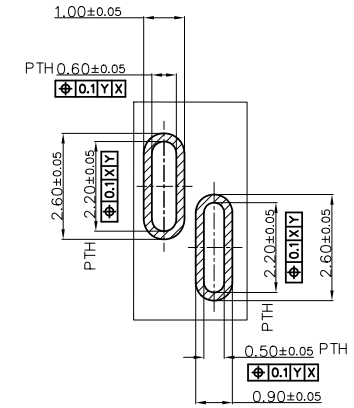


RECOMMENDED P.C.B BOARD PATTERN LAYOUT
FOR PJSS0056-C*01H & PJSS0056-C*21H (THICKNESS=1.0mm)
FOR PJSS56-C*61H (THICKNESS=1.2mm)
(TOP VIEW) TOLERANCE: ±0.05

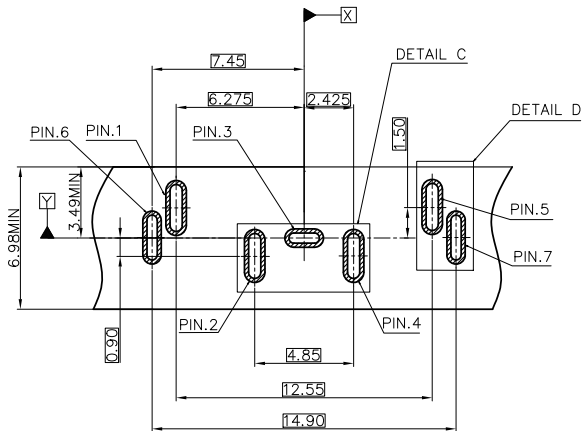
PIN DEFINE:
1: GND
2: POWER
3: DETECT (ID)
4: POWER
5: GND
6: GND
7: GND



DETAIL: A

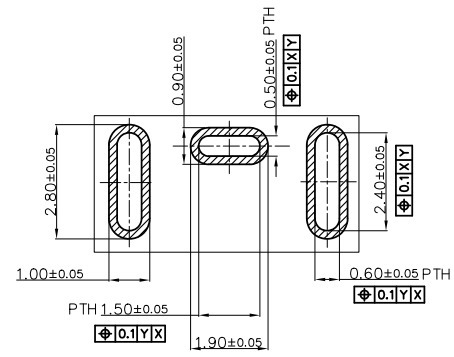


DETAIL: B

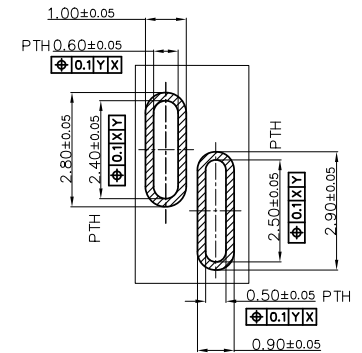


RECOMMENDED P.C.B BOARD PATTERN LAYOUT
FOR PJSS0056-C*11H(THICKNESS=1.0mm)
FOR PJSS0056-C*41H(THICKNESS=1.6mm)
(TOP VIEW) TOLERANCE: ±0.05

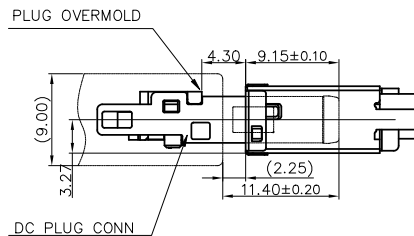
PIN DEFINE:
1: GND
2: POWER
3: DETECT (ID)
4: POWER
5: GND
6: GND
7: GND



DETAIL: C



DETAIL: D

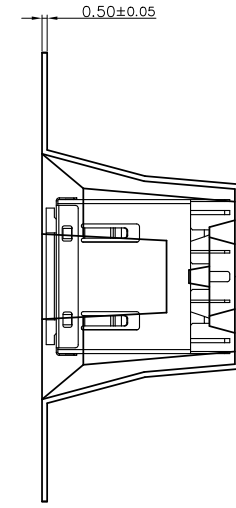
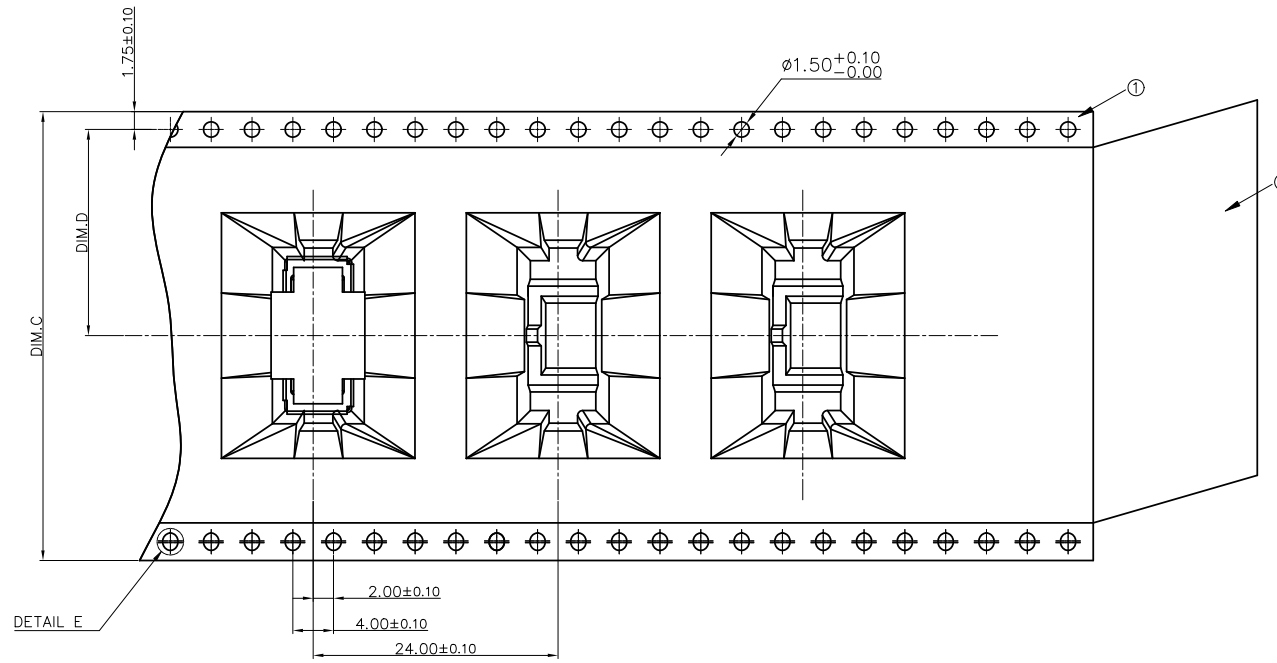


MATING CONDITION
SCALE 2:1

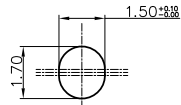
| | | | |
|-------------------|--|---|---|
| UNITS: mm | GENERAL TOLERANCE | APPROVED: River Yao | PART NO.: PJSS0056-C**1H |
| DATE: 03/20'20 | X. ±0.50 .X ±0.30 .XX ±0.20 N/A | CHECKED: Wes Wu | TITLE: CUSTOMER DRAWING FOR DC JACK 90° DIP TYPE |
| SHEET: 2/3 | MATERIAL: N/A | DRAWING: Fei Liu | DRAWING NO.: 820-0000-088 |
| REV. G | FINISH: N/A | D Highstar Drapho ELECTRONICS TECHNOLOGY CO., LTD | |

ROHS HF

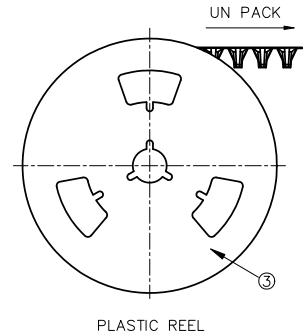
| | | |
|------|----------|-------|
| REV. | ECN. NO. | APPD. |
| | | |



DETAIL E
2.00±0.10
4.00±0.10
24.00±0.10



DETAIL:E
SCALE 8:1

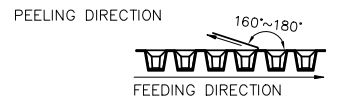


PLASTIC REEL

| P/N | CURRENT RATINGS | TAIL LENGTH | DIM.C | DIM.D | DIM.E | PCS/REEL | REEL/BOX | PCS/BOX |
|----------------|-----------------|-------------|-------|--------|--------|----------|----------|---------|
| PJSS0056-C001H | 7A | 2.0mm | 44mm | 20.2mm | 44.5mm | 120 | 6 | 720 |
| PJSS0056-CB01H | | 1.6mm | | | | | | |
| PJSS0056-C011H | | | | | | | | |
| PJSS0056-CB11H | | | | | | | | |
| PJSS0056-C021H | 8.5A | 2.0mm | | | | | | |
| PJSS0056-CB21H | | | | | | | | |
| PJSS0056-C061H | 12.0A | | | | | | | |
| PJSS0056-CB61H | | | | | | | | |
| PJSS0056-C041H | 7A | 2.7mm | 32mm | 14.2mm | 32.5mm | 120 | 8 | 960 |
| PJSS0056-CB41H | | | | | | | | |

| | | |
|------|--------------|-------------|
| ③ | REEL | POLYSTYRENE |
| ② | COVER TAPE | POLYSTER |
| ① | CARRIER TAPE | POLYSTYRENE |
| ITEM | DESCRIPTION | MATERIAL |

NOTES:
1.10 PITCHES CUMULATIVES TOLERANCE ON TAPE IS +/-0.20mm;
2.COVER TAPE PEELING STRENGTH :0.01~0.15Kgf;
3.THE COVER TAPE SHALL BE PULLED WITH A VELOCITY OF 100mm~300mm/MINUTE TO CARRIER TAPE;



| | | | | |
|-------------------|--|--------------------|--|---|
| UNITS: mm | GENERAL TOLERANCE | | APPROVED: River Yao | PART NO.: PJSS0056-C**1H |
| DATE: 03/20'20 | X. ±0.50 .X ±0.30 .XX ±0.20 N/A | X.* ±3* .X* ±2* | CHECKED: Wes Wu | TITLE: CUSTOMER DRAWING FOR DC JACK 90° DIP TYPE |
| SHEET: 3/3 | MATERIAL: N/A | Q'TY N/A | DRAWING: Fei Liu | DRAWING NO.: 820-0000-088 |
| REV. G | FINISH: N/A | ⊕ | Highstar Drapho ELECTRONICS TECHNOLOGY CO., LTD | |