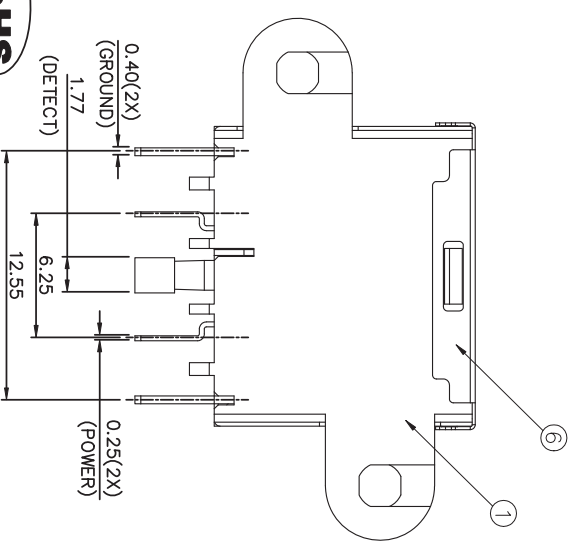
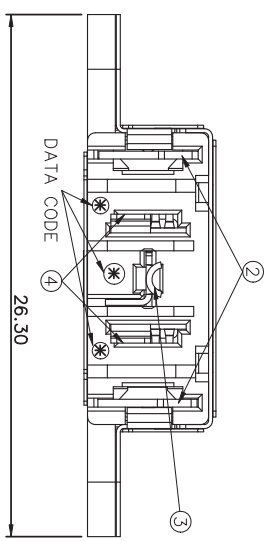
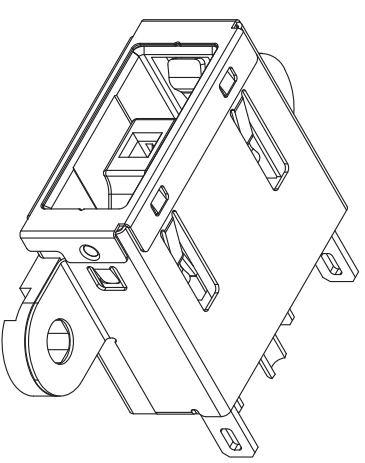
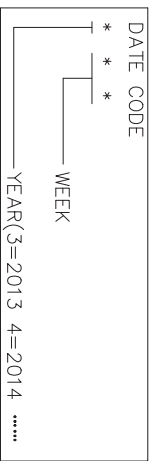
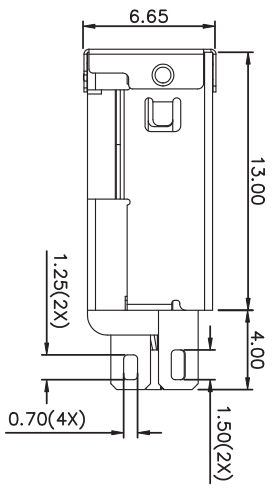
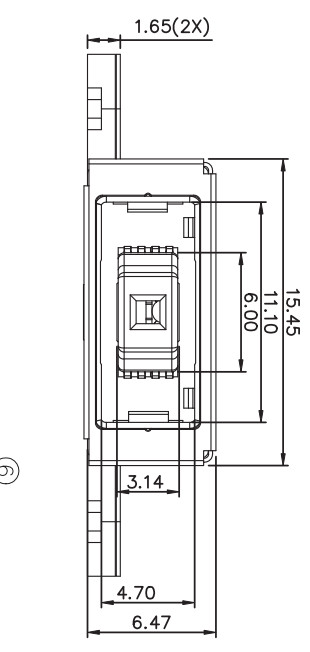
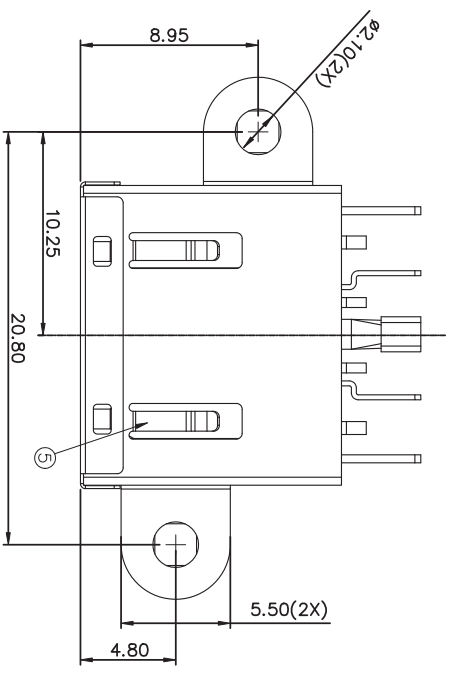


REV.	ECN NO.	APPD.
A	ECN130723006	Fan Fang



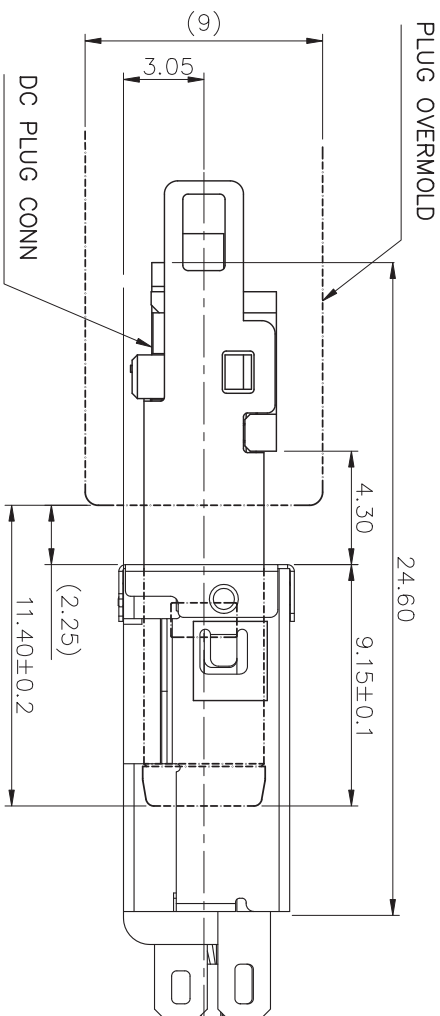
1	FRONT SHELL	STAINLESS STEEL	10u" MIN. NICKEL UNDER PLATING:	⑥
1	SHELL	STAINLESS STEEL	10u" MIN. NICKEL UNDER PLATING:	⑤
2	POWER CONTACT	COPPER ALLOY	80u" MIN. NICKEL UNDER PLATING: 8u" MIN. GOLD PLATING ON CONTACT AREA: 80u" MIN. MATTE TIN PLATING ON SOLDER AREA.	④
1	DETECT CONTACT	COPPER ALLOY	80u" MIN. NICKEL UNDER PLATING: 8u" MIN. GOLD PLATING ON CONTACT AREA: 80u" MIN. MATTE TIN PLATING ON SOLDER AREA.	③
2	GROUND CONTACT	COPPER ALLOY	80u" MIN. NICKEL UNDER PLATING: 8u" MIN. GOLD PLATING ON CONTACT AREA: 80u" MIN. MATTE TIN PLATING ON SOLDER AREA.	②
1	HOUSING	HIGH TEMP-PLASTIC	UL94V-0	①

UNITS:	GENERAL TOLERANCE	APPROVED:	PART NO.:	ITEM NO.
mm	±0.50		PJCS0056-S*02H	
DATE:	X ±0.30	CHECKED:	TITLE:	
7/25/13	X ±1		CUSTOMER DRAWING	
SCALE:	.XX ±0.20	DRAWING:	DRAWING NO.:	
N/A	.XX		820-0000-0048	
SHEET:	MATERIAL:			
1/2	Q'TY			
REV. A	FINISH:			



- NOTES:
- 1.MATERIAL: SEE TABLE.
 - 2.ELECTRICAL PERFORMANCES:
 - 2-1.VOLTAGE RATINGS: 25V DC MAX.
 - 2-2.CURRENT RATINGS:
 - 7A MAX TWO POWER CONTACT
 - 1A MAX PER DETECT CONTACT

- 2-3.LOW LEVEL CONTACT RESISTANCE:
 - (1). GROUND CONTACT 7 mΩ MAX. INITIAL, 10mΩ MAX, FINAL.
 - (2). DETECT CONTACT 10 mΩ MAX. INITIAL, ΔR=15mΩ MAX, FINAL.
 - (3). POWER CONTACT 7 mΩ MAX. INITIAL, ΔR=15mΩ MAX, FINAL.
- 2-4.INSULATION RESISTANCE: 500 MΩ MIN.
- 2-5.DIELECTRIC WITHSTANDING VOLTAGE:
 - SUBJECT A VOLTAGE OF 150V rms FOR 1 MINUTE BETWEEN ADJACENT CONTACTS PER 3.MECHANICAL PERFORMANCES:
 - 3-1.MATING FORCE: 3.0Kgf MAX.
 - 3-2.UNMATING FORCE: 0.7Kgf MIN.
 - 3-3.DURABILITY: 5000 CYCLES.
 - 4.G.P PASSED ACCORD WITH ROHS STANDARD.



P J C S 005 6 - S * 0 2 H

C: CABLE TYPE
S: RECEPTACLE
CONTACT PLATING:
6: GOLD 8u"MIN

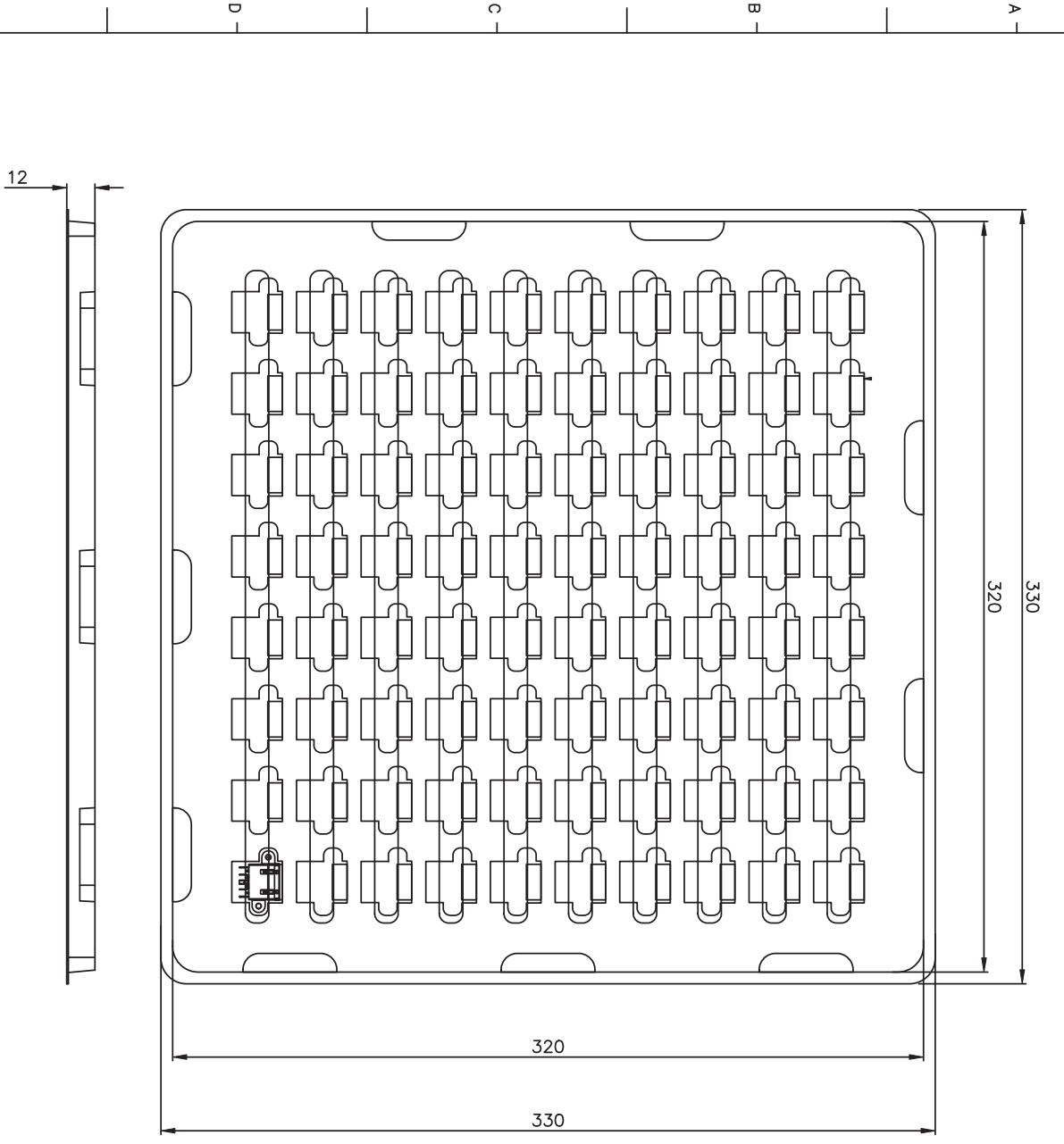
HALOGEN FREE
PACKAGE CODE:
2: TRAY
COLOR: 0=YELLOW
B=BLACK

MATING CONDITION



UNITS: mm	GENERAL TOLERANCE	APPROVE:	PJCS0056-S*02H
DATE: 7/23/13	X ±0.50	CHECKED:	TITLE: CUSTOMER DRAWING
SCALE: N/A	X ±0.30	DRAWING:	DRAWING NO.: 820-0000-0048
SHEET: 2/3	.XX ±0.20	MATERIAL:	
REV. A	QTY	FINISH:	

Highstar
Drapho ELECTRONICS TECHNOLOGY CO., LTD



P/N	PCS/TRAY	TRAY/BOX	PCS/BOX
PJCS0056-S002H	80	25	2000

UNITS: mm	GENERAL TOLERANCE	DRAW:	PJCS0056-S*02H
DATE: 07/23/13	X: ±0.50 Y: ±0.30 Z: ±0.20	CHECKED:	TITLE: CUSTOMER DRAWING
SCALE: N/A	.XX ±1° .XX	APPROVE:	DRAWING NO.: 820-0000-0048
SHEET: 3/3	MATERIAL: Q'TY		
REV. A	FINISH:		



Highstar
Drapho ELECTRONICS TECHNOLOGY CO., LTD