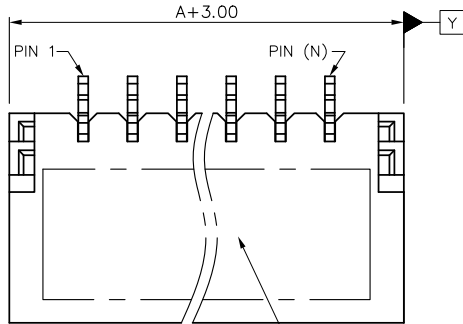


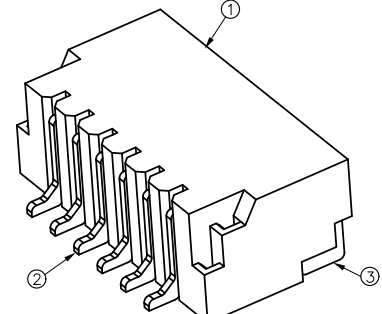
RoHS **HF**

REV.	ECN. NO.	APPD.
A	ECN130524006	Tommy Zhang
B	ECN150708017	Fan Fang
C	ECN151111017	Fan Fang
D	ECN171207014	Fan Fang
E	ECN190228006	Mike Wu
F	ECN190408012	Mike Wu
G	ECN191227003	Mike Wu

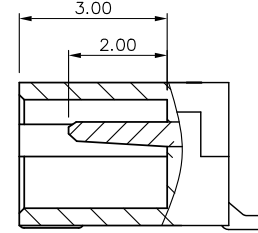
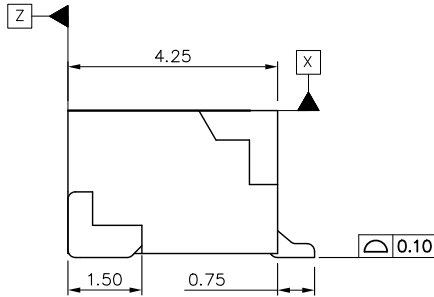
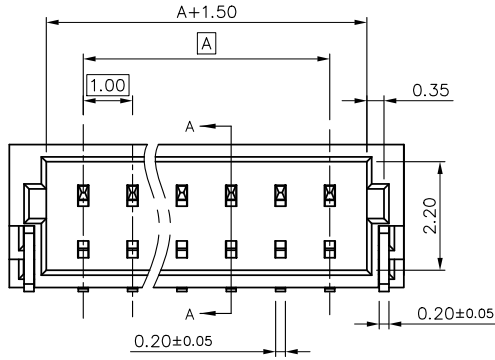


PICK UP AND PLACE AREA

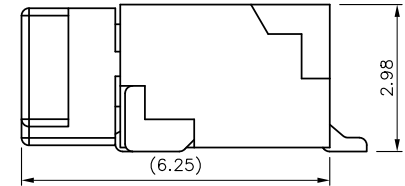
- NOTES:
1. DIMENSION SHALL BE INTERPRETED PER ASME Y14.5M-1994.
 2. ELECTRICAL CHARACTERISTICS
 - 2.1 RATED CURRENT: 1.0A MAX.;
 - 2.2 CONTACT RESISTANCE: 45 mOHMS MAX. FINAL;
 - 2.3 INSULATION RESISTANCE: 100 MOHMS MIN.;
 - 2.4 WITHSTANDING VOLTAGE: 100 VAC FOR 1 MINUTE MIN.;
 3. MECHANICAL CHARACTERISTICS
 - 3.1 DURABILITY: 25 CYCLES
 - 3.2 VIBRATION: PASSED MIL-STD-202F, METHOD 201.
 - 3.3 SHOCK: PASSED MIL-STD-202F, METHOD 213, CONDITION A.
 4. ENVIRONMENT CHARACTERISTICS OPERATION TEMPERATURE RANGE: -40°C TO +85°C .
 5. PLEASE CONTACT DRAPHO SALES REPRESENTATIVE TO VERIFY PRODUCT DETAILS & AVAILABILITY.
 6. HARMFUL MATERIAL MEET THE DOCUMENT DQSP2014.
 7. G.P PASSED ACCORD WITH ROHS STANDARD.
 CHLORINE(Cl): 900ppm MAX.
 BROMINE(Br): 900ppm MAX.
 BROMINE(Br)+CHLORINE(Cl): 1500ppm MAX.



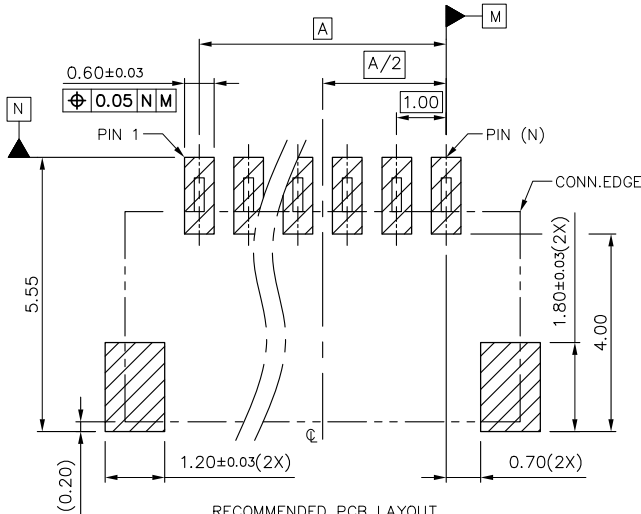
3D VIEW



SECTION A-A



MATING VIEW



RECOMMENDED PCB LAYOUT
TOLERANCE: +/-0.05

- PART LIST
- WS23***-S*291-HF(-M)
 - LEAD FREE & HALOGEN FREE
 - PACKAGE TYPE: TAPE AND REEL
 - PROFILE HEIGHT: 29: 2.9mmH
 - HOUSING COLOR: 0: NATURAL, 1: BLACK
 - CONTACT AREA PLATING: 0: MATTE TIN PLATING, 1: 1 u" GOLD PLATING
 - POS. NO. 02; 2 POS.
 - PITCH NO. 2: 1.0mm PITCH
 - WTB CONN.

P/N	A	③	PAD	2	COPPER ALLOY	NICKEL UNDER PLATING; GOLD FLASH ON ALL AREA.	FOR WS23**1-S*291-HF(-M)
WS2302*-S*291-HF(-M)	1.00						
WS2303*-S*291-HF(-M)	2.00						
WS2304*-S*291-HF(-M)	3.00						
WS2305*-S*291-HF(-M)	4.00						
WS2306*-S*291-HF(-M)	5.00						
WS2307*-S*291-HF(-M)	6.00						
WS2308*-S*291-HF(-M)	7.00	②	CONTACT	**	COPPER ALLOY	30-80u" NICKEL UNDER PLATING; 1u" MIN. GOLD PLATING ON CONTACT & SOLDER AREA.	FOR WS23**1-S*291-HF(-M)
WS2309*-S*291-HF(-M)	8.00						
WS2310*-S*291-HF(-M)	9.00						
WS2311*-S*291-HF(-M)	10.00						
WS2312*-S*291-HF(-M)	11.00	①	HOUSING	1	HIGHTEMP -PLASTIC	30-80u" NICKEL UNDER PLATING; 80u" MIN. MATTE TIN PLATING ON CONTACT & SOLDER AREA.	FOR WS23**0-S*291-HF(-M)
WS2313*-S*291-HF(-M)	12.00					UL94 V-0,NATURAL OR BLACK	PART NO.
WS2314*-S*291-HF(-M)	13.00						
WS2315*-S*291-HF(-M)	14.00						
WS2316*-S*291-HF(-M)	15.00						
WS2317*-S*291-HF(-M)	16.00						
WS2318*-S*291-HF(-M)	17.00						
WS2319*-S*291-HF(-M)	18.00						
WS2320*-S*291-HF(-M)	19.00						

ITEM	NAME	Q'TY	MATERIAL	FINISH
UNITS:	mm		GENERAL TOLERANCE	
DATE:	12/31'19		X. ±0.50 .X ±0.30	X.* ±3* .X* ±2*
SCALE:	N/A		.XX ±0.20	
SHEET:	1/2		MATERIAL: N/A	Q'TY N/A
REV.	G		FINISH: N/A	

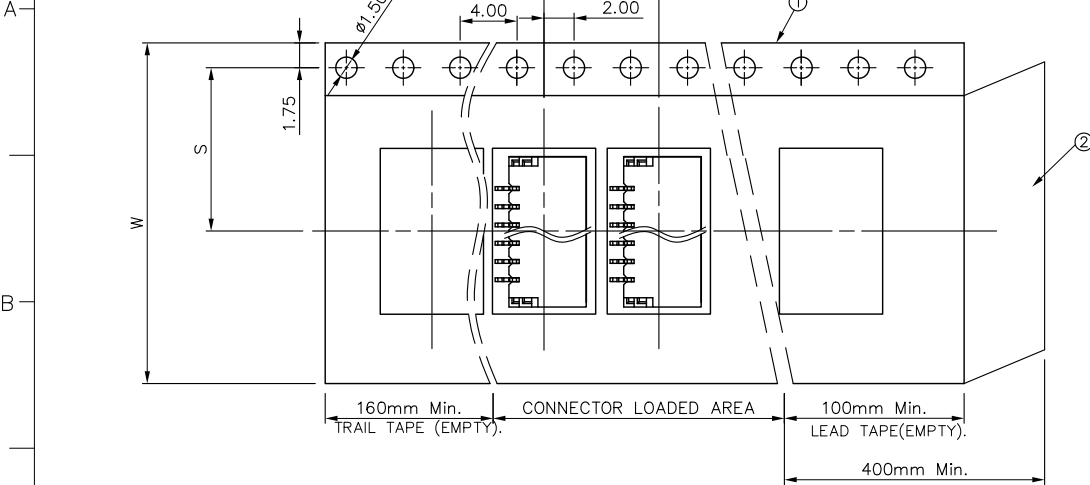
APPROVED:	PART NO.:
Mike Wu	WS23***-S*291-HF(-M)
CHECKED:	TITLE:
Mike Wu	CUSTOMER DRAWING FOR 1.0PH 2.98mmH WTB BOARD SIDE CONN.
DRAWING:	DRAWING NO.:
Adam Zhu	820-0000-0046

Highstar
Drapho ELECTRONICS TECHNOLOGY CO., LTD

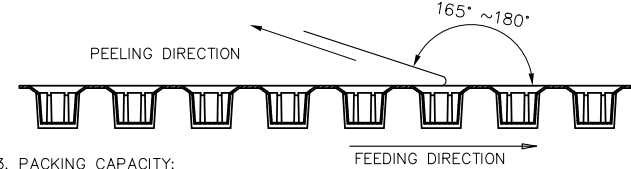
RoHS **HF**

NOTES:

- 10 PITCHES CUMULATIVE TOLERANCE ON TAPE ±0.20mm.
- COVER TAPE PEELING STRENGTH: 0.13kgf MAX AT 300mm/MINUTE.

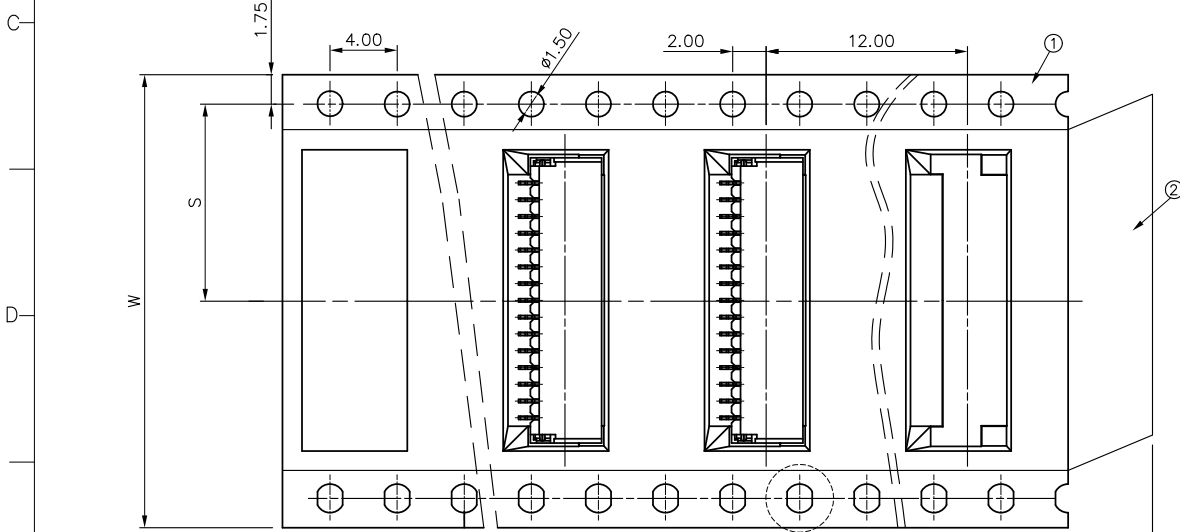


FOR W<24mm CARRIER TAPE

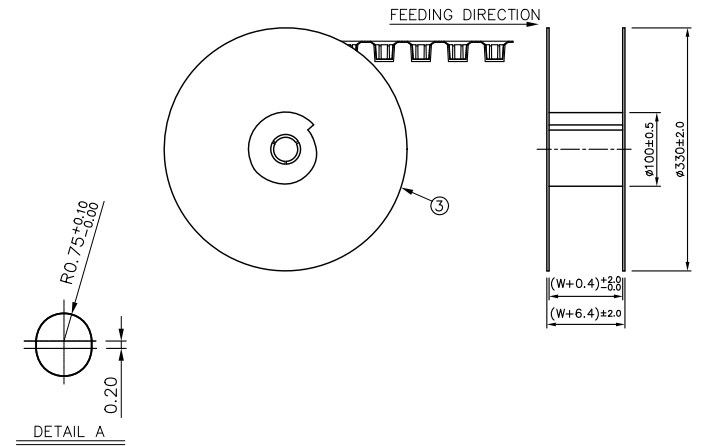


3. PACKING CAPACITY:

P/N	W	S	PCS/REEL	REEL/BOX	PCS/BOX
2~6 POS	16.00	7.50	1500	9	13500
7~14 POS	24.00	11.50	1500	6	9000
15~19 POS	32.00	14.20	1500	5	7500
20 POS	44.00	20.20	1500	6	9000



FOR W<24mm CARRIER TAPE



③	REEL	POLYSTYPENE
②	COVER TAPE	POLYESTER
①	CARRIER TAPE	POLYSTYRENE
ITEM	DESCRIPTION	MATERIAL

UNITS: mm	GENERAL TOLERANCE		APPROVED: Mike Wu	PART NO.: WS23***-S*291-HF(-M)
DATE: 12/31'19	X. ±0.50 .X ±0.30 .XX ±0.20	X.* ±3° .X.* ±2°	CHECKED: Mike Wu	TITLE: CUSTOMER DRAWING FOR 1.0PH 2.98mmH WTB BOARD SIDE CONN.
SCALE: N/A			DRAWING: Adam Zhu	DRAWING NO.: 820-0000-0046
SHEET: 2/2	MATERIAL: N/A	Q'TY N/A	 Drapho ELECTRONICS TECHNOLOGY CO., LTD	
REV. G	FINISH: N/A			