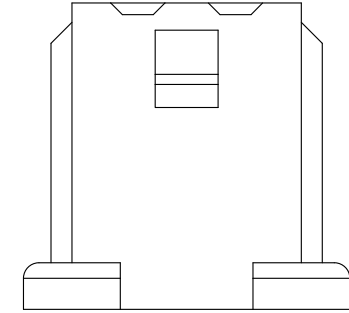
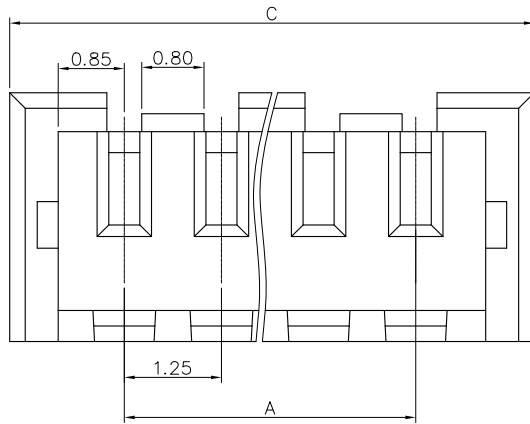


RoHS HF

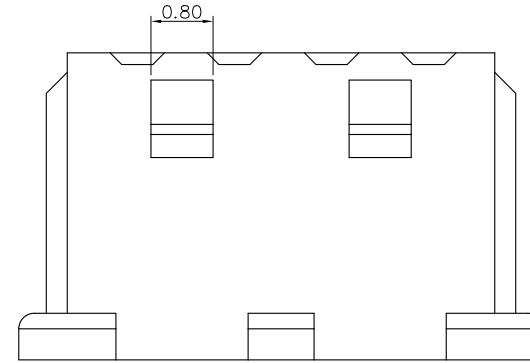
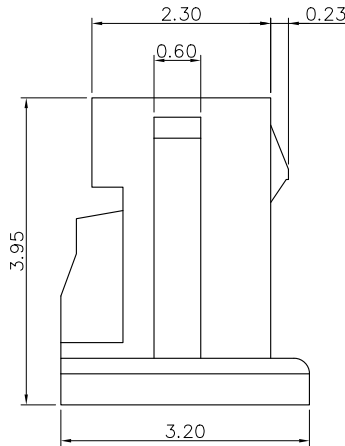
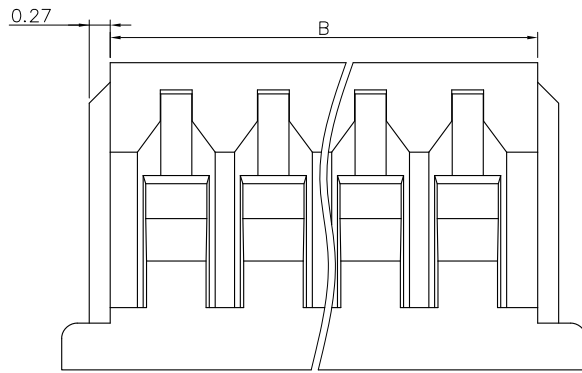
REV.	ECN NO.	APPD.
A	ECN150316001	Fan Fang
B	ECN160921005	Fan Fang
C	ECN220528023	Mike Wu



FOR 2~3POS WITH ONLY ONE LOCK

- NOTES:
 1. MATERIAL: THERMOPLASTIC,UL94V-0.
 2. DIMENSIONS SHALL BE INTERPRETED PER ASME Y14.5M-1994.
 3. ELECTRICAL PERFORMANCES:
 3-1. CONTACT RESISTANCE: 20mOHMS Max.(INITIAL)
 3-2. INSULATION RESISTANCE: 1000MOHMS Min.(INITIAL)100MOHMS Min.(FINAL)
 3-3. DIELECTRIC WITHSTANDING VOLTAGE: SUBJECT VOLTAGE OF 500V AC FOR 1 MINUTE BETWEEN ADJACENT CONTACTS PER.
 4. MECHANICAL PERFORMANCES:
 4-1. MATING FORCE: 1 Kgf/PIN Max.
 4-2. UNMATING FORCE: 0.1 Kgf/PIN Min.
 4-3. DURABILITY: 30 CYCLES.
 5. HARMFUL MATERIAL CONTROL MEET "DQSP2014".
 6. PACKAGE CAPACITY:

P/N	PCS/BAG	BAG/BOX	PCS/BOX
060-*0**-097	1000	20	20000



Part No	Dimensions		
	A	B	C
2P		3.00	4.25
3P	2.50	4.25	5.50
4P	3.75	5.50	6.75
5P	5.00	6.75	8.00
6P	6.25	8.00	9.25
7P	7.50	9.25	10.50
8P	8.75	10.50	11.75
9P	10.00	11.75	13.00
10P	11.25	13.00	14.25
11P	12.50	14.25	15.50
12P	13.75	15.50	16.75
13P	15.00	16.75	18.00
14P	16.25	18.00	19.25
15P	17.50	19.25	20.50
16P	18.75	20.50	21.75
17P	20.00	21.75	23.00
18P	21.25	23.00	24.25
19P	22.50	24.25	25.50
20P	23.75	25.50	26.75

HOUSING PART NO.

060-*0**-097

POS NO.
 02: 2POS
 03: 3POS
 :

0: NATURE
 1: BLACK

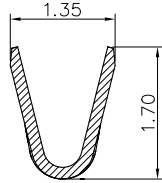
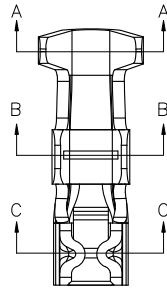
PART LIST AFTER ASSEMBLY

WH 32 ***-C*323-HF
 WTB CONN. LEAD & HALOGEN FREE
 3: 1.25PITCH PROFILE HEIGHT
 POS. NO. 32: 3.2mmH
 02: 2POS. CONTACT AREA PLATING
 0: NATURE
 1: BLACK
 1: GOLD FLASH
 0: TIN PLATING

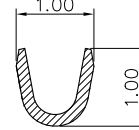
UNITS: mm	GENERAL TOLERANCE	APPROVE: Mike Wu	PART NO.: 060-*0**-097
DATE: 05/31'22	X. ±0.50 X ±0.30 SCALE: N/A	CHECKED: Mike Wu	TITLE: CUSTOMER DRAWING
SHEET: 1/2	MATERIAL: SEE TABLE	DRAWING: Adam Zhu	DRAWING NO.: 820-0000-0233
REV. C	FINISH: SEE TABLE	Q'TY N/A	Highstar Drapho ELECTRONICS TECHNOLOGY CO., LTD

REV.	ECN NO.	APPD.

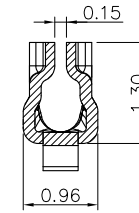
RoHS HF



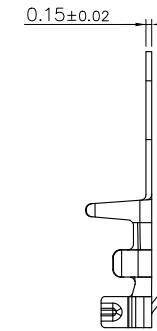
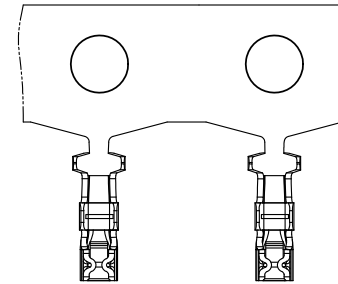
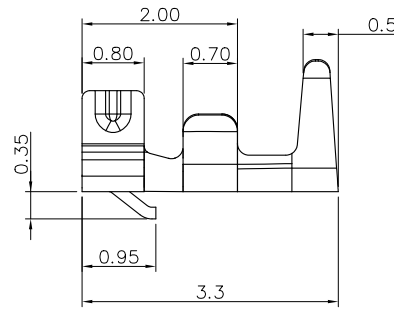
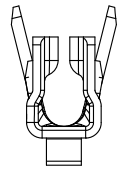
SECTION A-A



SECTION B-B



SECTION C-C



050-0***-097

WITH CARRY VIEW


03C1 MATTE TIN
0411 GOLD FLASH

NOTES:

1. MATERIAL: COPPER ALLOY, T=0.15+/-0.02mm
2. THE BURRS MUST BE LESS THAN 0.05mm.
3. CAMBER ALLOWED: 3mm Max IN 1.0m WHEN MEASURF IN CONTINUOUS STRIP.
4. HARMFUL MATERIAL CONTROL MEET DQSP2014.
5. WIRE RANGE: AWG#28~#32, INSULATION O.D.: 1.00mm MAX.
6. PACKAGE CAPACITY:

P/N	PCS/RELL	RELL/BOX	PCS/BOX
050-0***-097	15000	10	150000

CONTACT	30u" Min. NICKEL UNDER PLATING; 80u" Min. MATTE TIN PLATING OVERALL.	050-03C1-097
	30u" Min. NICKEL UNDER PLATING; GOLD FLASH OVERALL.	050-0411-097
NAME	FINISH	P/N

UNITS: mm	GENERAL TOLERANCE	APPROVE: Mike Wu	PART NO.: 050-0***-097
DATE: 05/31'22	X. ±0.50 X. ±0.30	CHECKED: Mike Wu	TITLE: CUSTOMER DRAWING
SCALE: N/A	.XX ±0.20 .XXX ±0.15	DRAWING: Adam Zhu	DRAWING NO.: 820-0000-0233
SHEET: 2/2	MATERIAL: SEE NOTES	Q'TY N/A	 Highstar Drapho ELECTRONICS TECHNOLOGY CO., LTD
REV. C	FINISH: SEE TABLE	